

OCUflash® blue

eye drops, solution preservative free

1. What OCUflash blue is and what it is used for

OCUflash blue is eye drops, solution with no preservatives, with Eyebright (*Euphrasia officinalis*) extract. It is intended for dropping into eyes, irrigate eyes or as a compress for eyes. Eyebright extract act against inflammation, as disinfection and astringent. These characteristics of Eyebright has long been used to soothe the eyes, as a prevention and supportive treatment of non-infectious inflammation of the conjunctiva and eyelids.

OCUflash blue is used as an eyewash solution to flash irritating particles from the eye and the eye discomfort such as burning, cutting, itching and foreign body sensation in the eye.

OCUflash blue does not contain preservatives, so it is an ideal product for contact lens wearers and for people with sensitive eyes.

In practice, the OCUflash blue can be used:

- to wash the eye post tonometry and gonioscopy
- to remove foreign bodies, dust and chlorinated water
- to leach fluorescein solutions residues
- to wash out mucous and purulent secretions
- to eyewash after wearing contact lenses
- as first aid after slight conjunctival burns by acids or bases (lime, mortar)
- as supportive remedy in conjunctivitis
- to remove cosmetics from around the eyes (eyelids, eyelashes)

OCUflash blue can be used by adults, adolescents and children. Due to the safety of the product, it can be administered to newborns, infants, pregnant women and nursing mothers.

2. What you need to know before you use OCUflash blue

Do not use OCUflash blue if you are allergic to any substance of this product. If you currently use other eye products, it is generally preferable to wait for at least 5 minute between the application of each.

3. How to use OCUflash blue

To calm the eyes and as a supportive treatment of non-infectious inflammation of the conjunctiva and eyelid a dose of 1-2 drops 1-4 times daily is recommended.

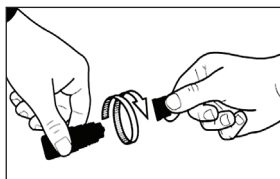
In eyewashing, the solution is applied until the contaminant or foreign body is removed. OCUflash blue can be used on long-term basis.

Contact lens wearers

OCUflash blue may be used while wearing contact lenses.

Caution before applying

1. Wash your hands and sit or stand comfortably.
2. Unscrew the bottle cap.



3. Hold the bottle downwards between the thumb and the other fingers.
4. Before the first application it is recommended to drop off the first drop out of the eye by gently squeezing the bottle, because in strong and irregular squeezing of the bottle the solution can be ejected in a larger volume.
5. Use your finger to gently pull down the lower eyelid of your affected eye.

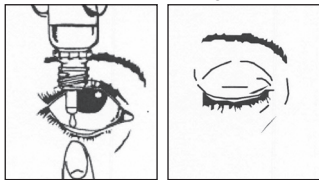


6. Place the tip of the dropper close to your eye but so that it does not touch the eye or the adjacent regions of the eye.

7. Squeeze the bottle gently so that only 1-2 drops go into your eye, or more drops in case of necessary rinsing. Then release the lower eyelid and slowly close the eye so that *OCUflash blue* distributes evenly along the surface of the eye.

For the next drop, let suck back the air into the plastic bottle to return to its original state, and then continue to apply to the eye as recommended.

Please note that there might be a few seconds delay between squeezing and the drop coming out. The bottle must not be squeezed too hard.



8. If necessary, repeat the procedure for the second eye.



9. After use, the bottle should be shaken once in a downwards direction, without touching the dropper tip, in order to remove any residual liquid on the tip. This is necessary in order to ensure sterility of the eye drops and easier delivery of the next drop in a subsequent application.

10. Immediately after application tightly close the bottle cap.

4. What are possible side effects

Rarely, immediately after application you may experience a slight transient burning or allergic reaction to some of the substances of this product.

If any of these symptoms or any other unusual reactions occur, contact your doctor or pharmacist.

5. What *OCUflash blue* contains

Sodium chloride 7 mg per 1 ml, disodium edetate dihydrate, potassium chloride, magnesium chloride hexahydrate, polysorbate 80, Eyebright (*Euphrasia officinalis*) extract, sodium borate, sodium hydroxide, water purified.

6. How to store *OCUflash blue* and other information

Keep the bottle stored in the original container at 25 °C.

Protect from cold and frost.

Keep the product out of the sight and reach of children.

Do not use the product after the expiry date which is stated on the label or carton next to the sanglass icon. The expiry date refers to the last day of that month.

Do not use *OCUflash blue* after 3 months of first opening the bottle.

Pack size: 1 x 10 ml



UNIMED PHARMA spol. s r.o., Orišková 11, 821 05 Bratislava,
Slovak Republic

Tel: +421 2 4333 3786

Fax: +421 2 4363 8743

e-mail: unimedpharma@unimedpharma.sk

www.unimedpharma.eu



Date of the last revision: April 2020